

The White House.

4. The White House. Read and play "hide and seek". Then check your reading.

The home of America's president has six storeys and 132 rooms. The president and his family live in the central building, and the reception rooms are also there, on the main floor. The president works in the west wing, in the Oval Office, which is probably the most famous room in the White House, and a symbol of the presidency.



ture: just a few seats and a grand piano. This room is used for press conferences, concerts, dances and weddings. If a president dies during office, his body lies in state in this room.

Where are they?

The FBI agents can't find the President and the First Lady! They are not in the West Wing or in their private

The State Dining Room: for 140 guests.

The Red Room: for smaller dinner parties.

The Blue Room: a reception room. At Christmas, the official 6-metre high White House Christmas tree is placed in the middle of the room.

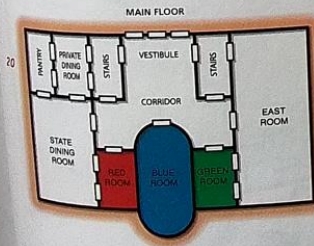
The Green Room: used as a living room. It opens onto the South Portico, with a lovely view over the South Lawn.

The East Room: a big reception room with little furni-

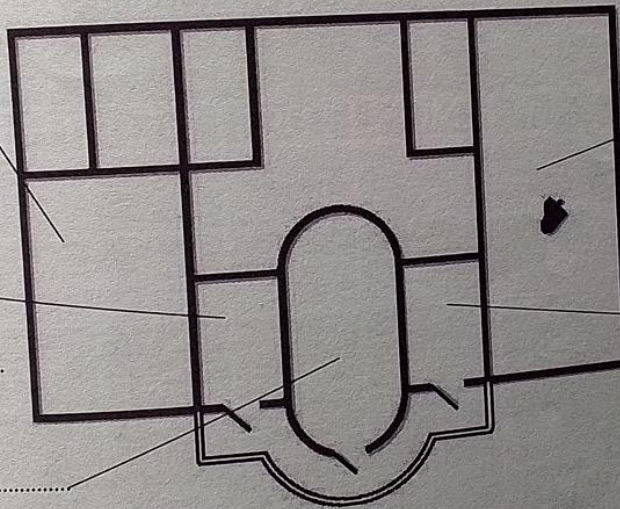
apartments. In fact, they are not far from the Christmas tree, but not in the same room. They are between two windows, opposite a column. It's quite cold there, but they love playing hide and seek with the FBI.



What about their dog? He is in a big room which is next to the Green Room. Nobody can see him because he is sitting under a musical instrument, behind the pedals.



4. The White House: colour the rooms, write their names and note down the information.



Where are the President, his First Lady and the dog hiding? Write crosses (X).

